



*For our 7th annual International Womxn's Day group exhibition, we're diving into **Love Language**.*

Love Language is a collective thank you to the people who raised us, cared for us and stood beside us. Mothers, siblings, aunties, elders, chosen family, friends and community. It's a pause to acknowledge the love that moves through our lives. The love we give, the love we receive and the love that stays with us.

We're interested in love as something lived rather than defined. Love found in care, presence, memory, routine, touch and time. In shared meals, quiet gestures, inherited habits, laughter, protection and patience.

While the exhibition centres warmth and appreciation, it also makes space for complexity. Love can be layered and imperfect, shaped by lived experience, gender and power.

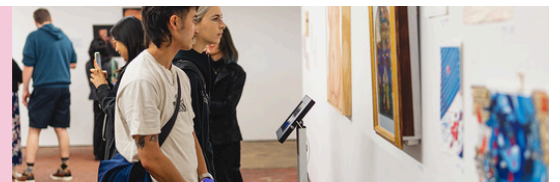
Artists are invited to respond in their own language. Intimate or expansive. Quiet or expressive. Personal or collective. This is an open invitation to share how love lives in your world and to contribute to a collective moment of gratitude.

EVENT INFO



Exhibition Dates	Saturday 7 th of March & Sunday 8 th of March
Location	The Store @ Abbotsford Convent
Time	Saturday: 2:00pm - 8:00pm Sunday: 12:00pm - 5:00pm
Ticket Cost (Saturday)	\$25 including fees for guests
Ticket Cost (Sunday)	Entry by Donation

ELIGIBILITY

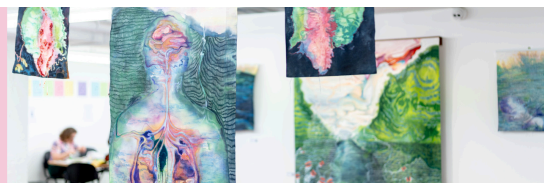


Applications are open for all female and non-binary artists aged 18+ of all skill-sets; emerging, established or professional.

We curate our events so that an array of different art mediums is represented at every exhibition. If you haven't seen work like yours presented with us before, there's all the more reason to apply.

Selection will be based on alignment with the exhibition theme, quality and originality of work, diversity of mediums, and feasibility for the space.

KEY DATES



Tuesday 20 th January 2026	Application Closes at 11:59pm
Thursday 5 th January 2026	Artwork Drop Off 10:00 AM - 7:00 PM
Sunday 8 th March 2025	Artwork Pick Up 5:00 PM - 6:00 PM

THE SPACE

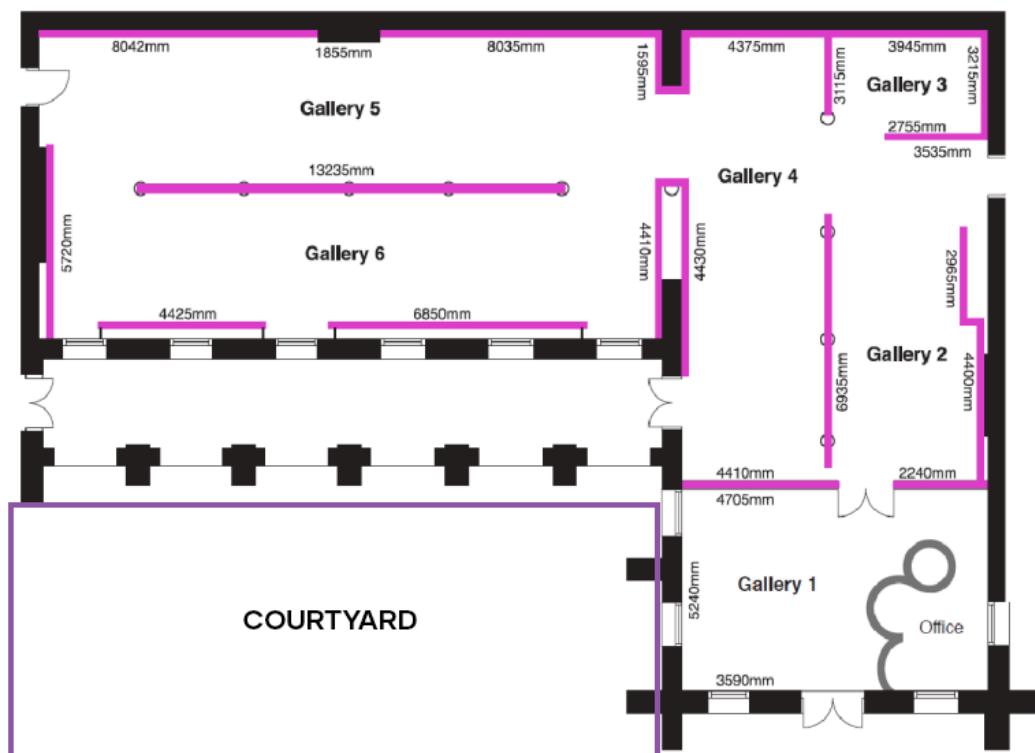


Artists will share walls in Gallery 2 to 6.

Each artist has the opportunity to

- exhibit a maximum of 5 works (minimum = 1)
- showcase on a maximum wall space of 3m wide (no minimum)

Works in all mediums are welcome, including painting, photography, sculpture, installation, moving image, and sound. We have a limited number of projectors, plinths, and other display equipment available, allocated on a first-come, first-served basis. If your work requires these or other special installation needs, please include full details in your application so we can confirm availability and feasibility in advance.



APPLICATION PROCESS



All proposals must be made via our google form. Please ensure you have prepared the following:

1	A Photo Of You We collect this during our application process so that if you are successful, we can immediately start creating your artist profiles for promotion on our socials
2	3 Photos of Past Works with details including title, year of creation and medium
3	A Project Proposal Tell us about the work(s) you are wanting to exhibit and how it relates to the theme
4	Artist Bio 50 - 150 words about you written in <u>third person</u> .
5	Supporting Documents Up to 10 support images - Must be combined as a single PDF – can include drawing plan of proposal to be completed or draft of your proposal in the works.

EXPECTATIONS



Artwork Completion

The project that you are proposing does not have to be complete at the time of submitting your proposal but there is an expectation that it will be **complete 2 weeks before the exhibition.**

Deadlines

Once you have submitted your proposal, you will be linked a new google form to collect information on your exhibiting works.

Deadlines include:

1. About You Info Section

- By Wednesday, End of Day 28th of January

2. Artist Statement

- By Wednesday, End of Day 4th of February

7. Artwork Details + Artwork + Art Merch Sale Information

- By Wednesday, End of Day 18th of February

8. Photos of Showcasing Works, Merch Photos, Layout + Drop Off Time

- By Wednesday, End of Day 25th of February

Art Hanging

All exhibiting, hanging works are expected to be hang-ready: eg d-rings or a secure hanging wire.

Art Drop Off

Artists are expected to drop off their work on **Thursday the 5th of March 2026** between **10am-7pm** for our team to install. Installation artists can come in for install themselves on Thursday or Friday.

Art Pick Up

Artists are expected to be there at the end of the weekend **at 5pm on Sunday the 8th of March** to collect their works.

EXHIBITION FEE



This exhibition forms part of a large-scale, festival-style weekend at Abbotsford Convent. The program includes curated artworks, full installation and pack-down, a staffed bar, performances, market stalls, DJs, workshops and event-wide marketing across the weekend.

We aim to keep participation accessible while covering shared production costs. Unlike most exhibitions, our commission rate is capped at 15%. The artist contribution supports the production of the weekend and includes guest tickets that can be used, sold or passed on.

The standard contribution is \$160 and includes 6 guest tickets. If these guest tickets are distributed or sold, the effective contribution per artist remains low.

Standard contribution

\$160 contribution, including 6 guest tickets.

Split payment

\$80 on acceptance and \$80 two weeks before the exhibition, including 6 guest tickets.

Community ticket option

Platform offers a limited number of financial support positions for artists who may need additional flexibility. These positions allow the exhibition contribution to be covered through 8 guest tickets purchased by friends or community without a required upfront payment from you.

Support positions are limited and subject to approval. Tickets must be purchased using the artist's name at checkout by 20th of February. If the ticket allocation is not met by the deadline, the remaining balance will be payable.

If you anticipate needing this option, please email us **after submitting your application**. This will not affect selection and conversations are kept private.

SALE OPPORTUNITIES



If desired, artists have the opportunity to sell their original works + art merch on the night of the event. Our team will handle all the sales for you.

We take 15% commission for all sales.

Your Art Merchandise does not need to be of the works you are showcasing.

There is a limit of 5 merch item per artist in unlimited quantities. Essentially, each unique design and unique size is its own 'merch item'. *EG: 1 artist can sell...*

Merch Item 1: 10x copies of A4 prints of Design 1

Merch Item 2: 15x copies of A5 prints of Design 1

Merch Item 3: 5x tote bags in Design 2

Merch Item 4: 15 postcards in Design 3

Merch Item 5: 8x zines

Payments for sold works and merchandise will be made via bank transfer within 7 days after the exhibition. Please ensure you provide your correct bank details. Prices should be listed inclusive of GST (if applicable). Artists with an ABN may be asked to provide an invoice.

PLATFORM VALUES



Community

Designing events that encourage people to gather, share experiences, and engage with art in social, lively, and non-traditional spaces.

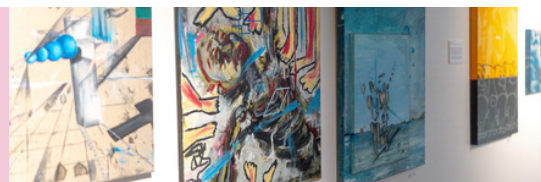
Representation

To promote participation of artists from all different cultural backgrounds and work to ensure there is representation across events.

Inclusivity

To actively ensure that gender, age, sexual orientation, different ability and income are not barriers to arts practice or participation.

EXHIBITION INCLUSION



- Curatorial advice
- Exhibition install and de-install by our team
- E-newsletter promotion
- Online listing and event promotion via Abbotsford Convent, our FB and Instagram
- Meta Advertising
- Photographer and Videographer at the event
- Wall mounted artist statement and artwork listing
- Management of all sales during the event
- Exhibition is held in accessible venues with non-gendered bathrooms

If you have specific accessibility needs for installation or de-install, please let us know in your application so we can accommodate.

BENEFITS OF EXHIBITING



- Affordable exhibition fee (essentially \$10 if you sell your tickets to 6 guests)
- Be part of a community that is like-minded and network with others in and out of your field
- Showcase your work to a large crowd (450+ guests)
- Chance to sell your works on the day
- Have your work marketed by our team across all our social media platforms
- Contribute to communities in need by helping us fundraise

HOW TO APPLY



Applications must be submitted via our google form following this link:

<https://forms.gle/iH3rYngWWmkERxwK6>

For any questions about the application process, artwork suitability, installation requirements, or accessibility, please contact us at hello@platformpresents.com.au

INSURANCE LIABILITY DISCLAIMER



While all care is taken during the storage and install of works, Platform will not be held responsible for any loss or damage to artworks (during transportation, display or storage), or personal injury to Gallery exhibitors.